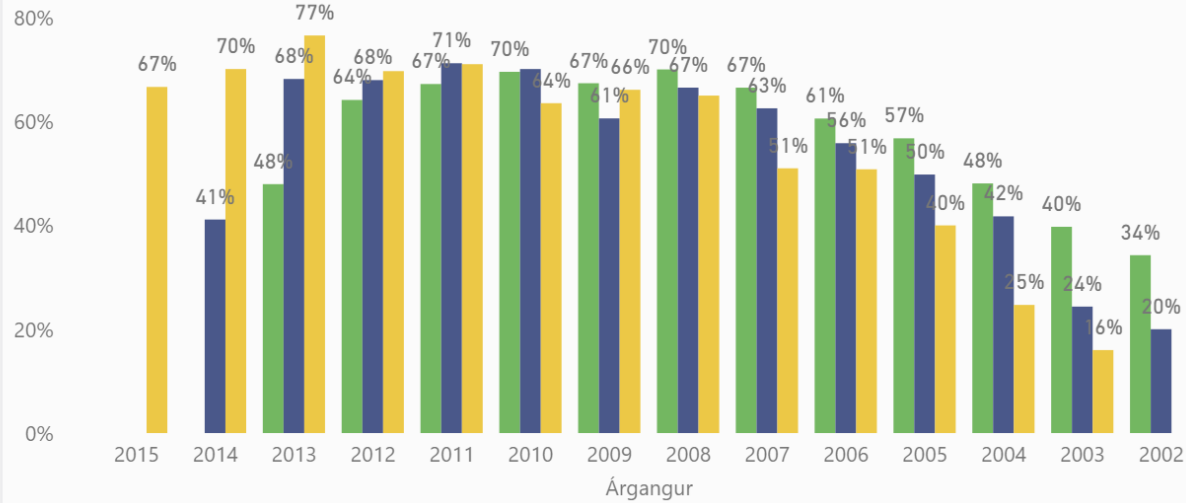




Nýting á Hvítárgreiðslum í Reykjanesbæ 2021

Nýting hvatagreiðslna milli árganga

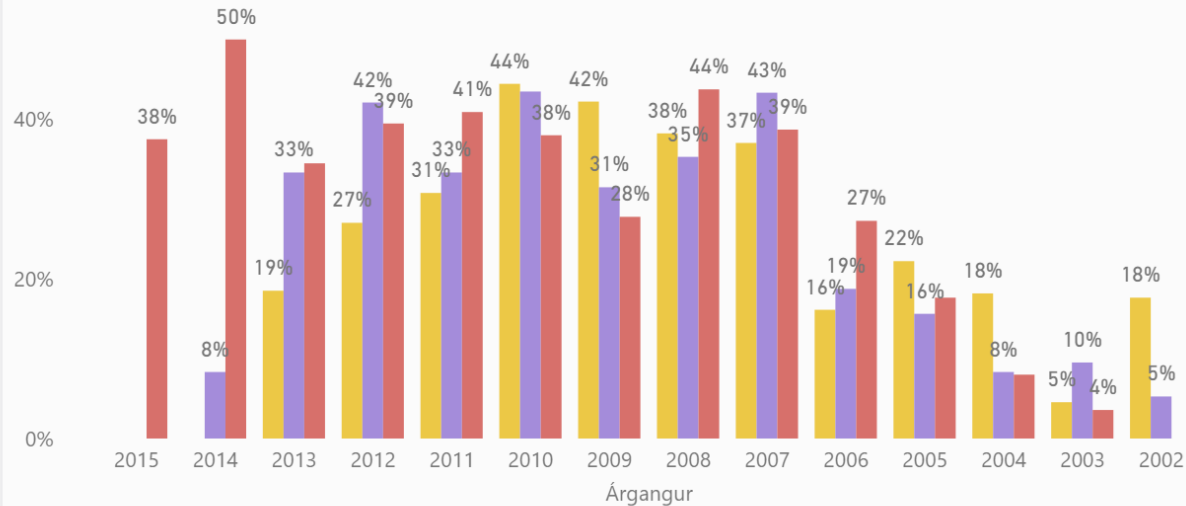
Ár ● 2019 ● 2020 ● 2021



	2019	2020	2021
Fjöldi hvatagreiðslna	1,704	1,751	1,902
Fjöldi barna í Reykjanesbæ	3,166	3,214	3,353
Nýting hvatagreiðslna	53.8%	54.5%	56.7%
Hvatagreiðslur - Ísl. ríkisfang	1,596	1,632	1,750
Fjöldi barna - Ísl. ríkisfang	2,756	2,782	2,885
Nýting hvatagreiðslna - Ísl. ríkisfang	57.9%	58.7%	60.7%
Hvatagreiðslur - Erl. ríkisfang	108	119	152
Fjöldi barna - Erl. ríkisfang	410	432	468
Nýting hvatagreiðslna - Erl. ríkisfang	26.3%	27.5%	32.5%

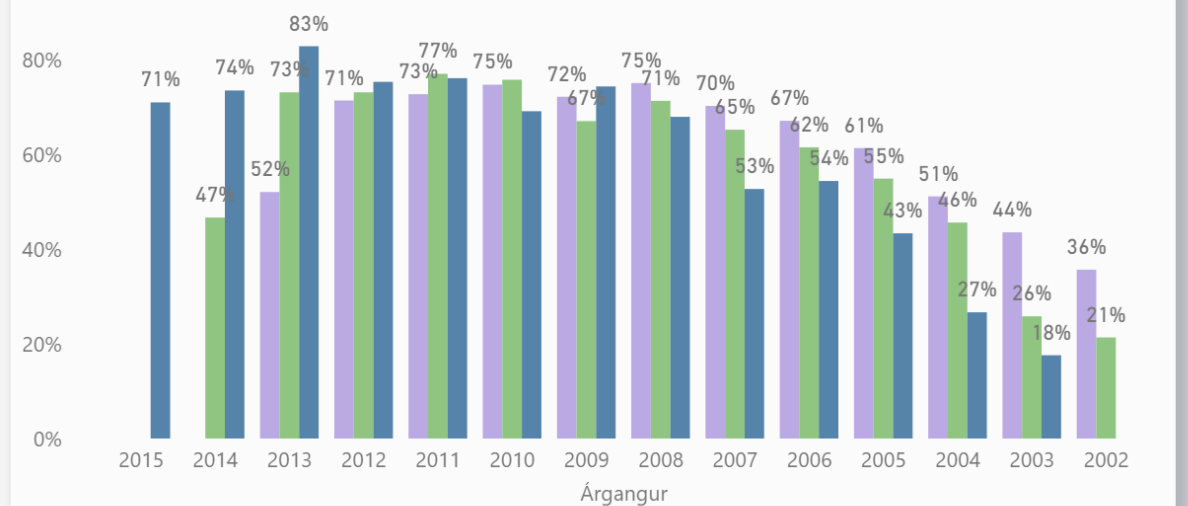
Börn með erlent ríkisfang - Nýting hvatagreiðslna milli árganga

Ár ● 2019 ● 2020 ● 2021

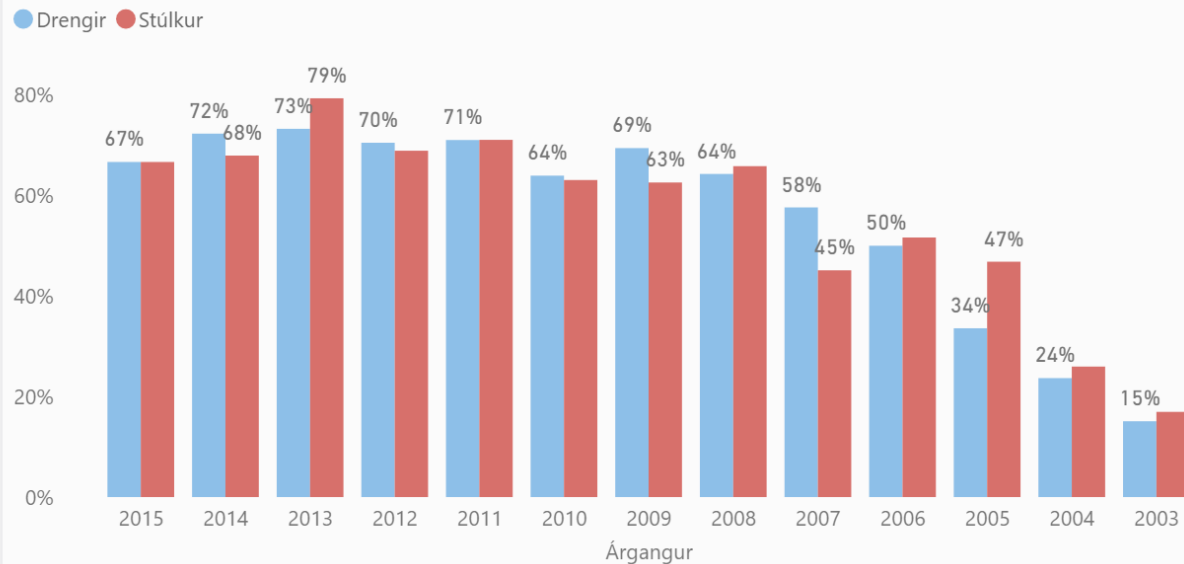


Börn með íslenskt ríkisfang - Nýting hvatagreiðslna milli árganga

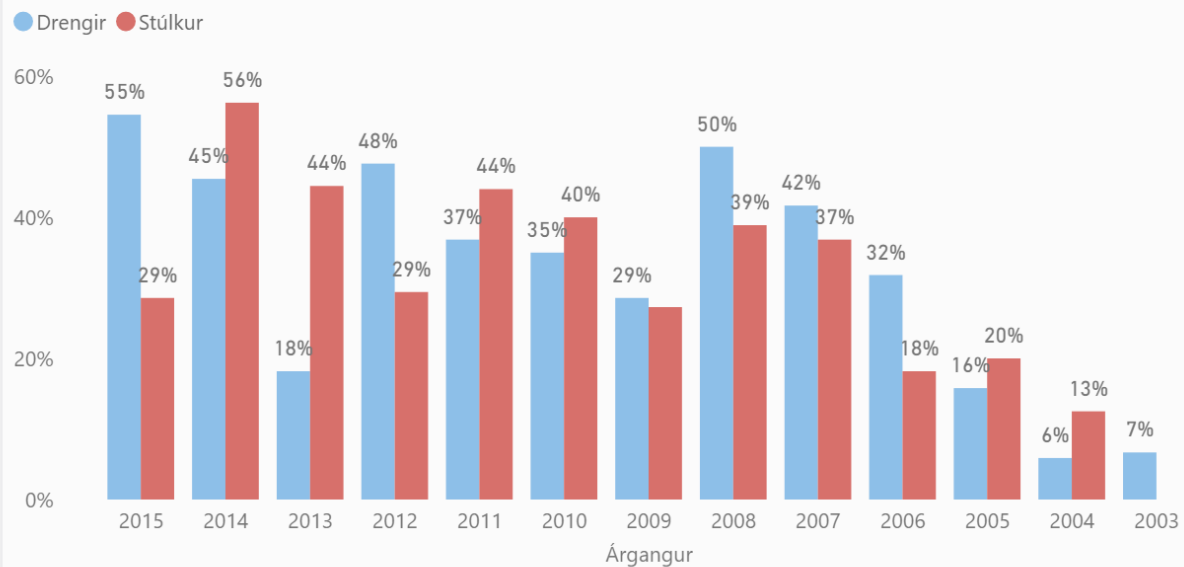
Ár ● 2019 ● 2020 ● 2021



Nýting hvatagreiðslna milli árganga

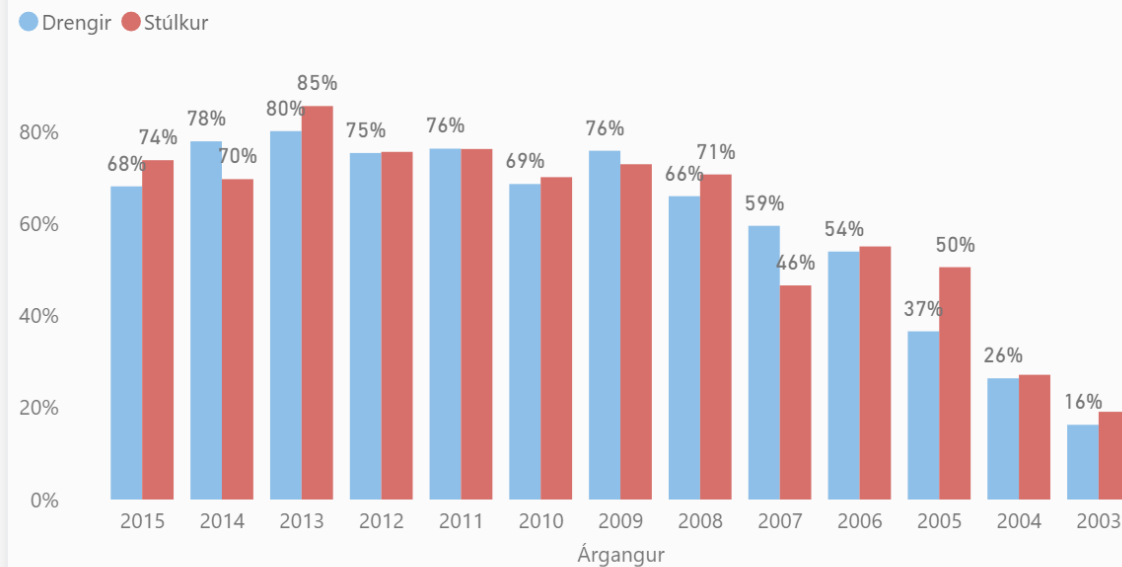


Börn með erlent ríkisfang - Nýting hvatagreiðslna milli árganga



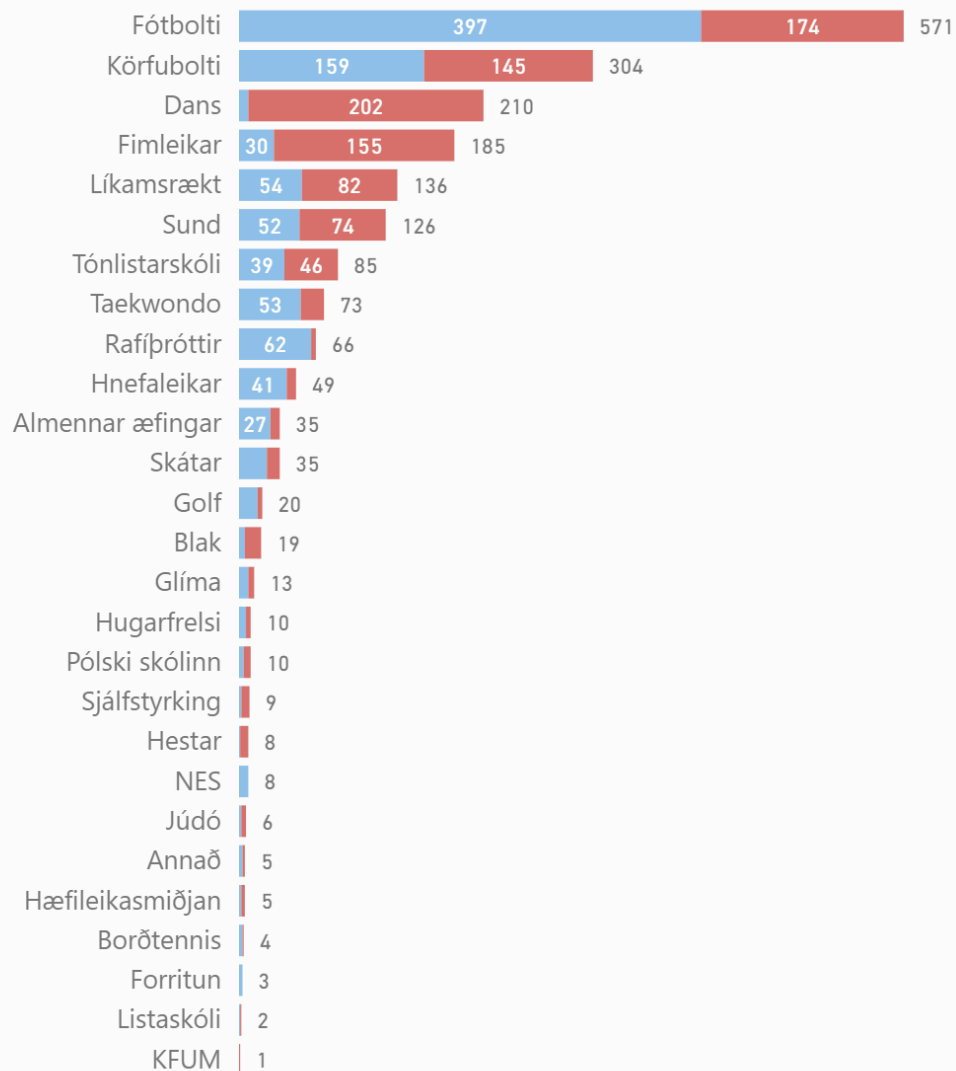
	Drengir	Stúlkur	Samtals
Fjöldi hvatagreiðslna	950	952	1,902
Fjöldi barna í Reykjanesbæ	1,688	1,665	3,353
Nýting hvatagreiðslna	56.3%	57.2%	56.7%
Hvatagreiðslur - Ísl. ríkisfang	878	872	1,750
Fjöldi barna - Ísl. ríkisfang	1,464	1,421	2,885
Nýting hvatagreiðslna - Ísl. ríkisfang	60.0%	61.4%	60.7%
Hvatagreiðslur - Erl. ríkisfang	72	80	152
Fjöldi barna - Erl. ríkisfang	224	244	468
Nýting hvatagreiðslna - Erl. ríkisfang	32.1%	32.8%	32.5%

Börn með íslenskt ríkisfang - Nýting hvatagreiðslna milli árganga



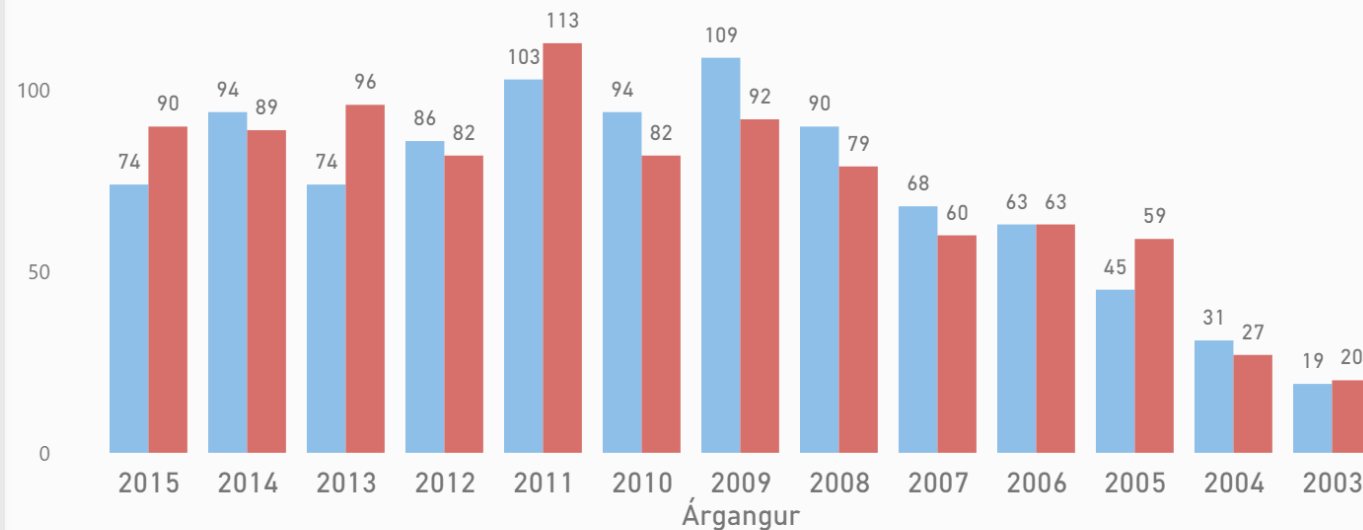
Hvatapeningar

● Drengir ● Stúlkur



Hvatapeningar eftir árgöngum

● Drengir ● Stúlkur



Hvatapeningar eftir félögum

● Drengir ● Stúlkur

